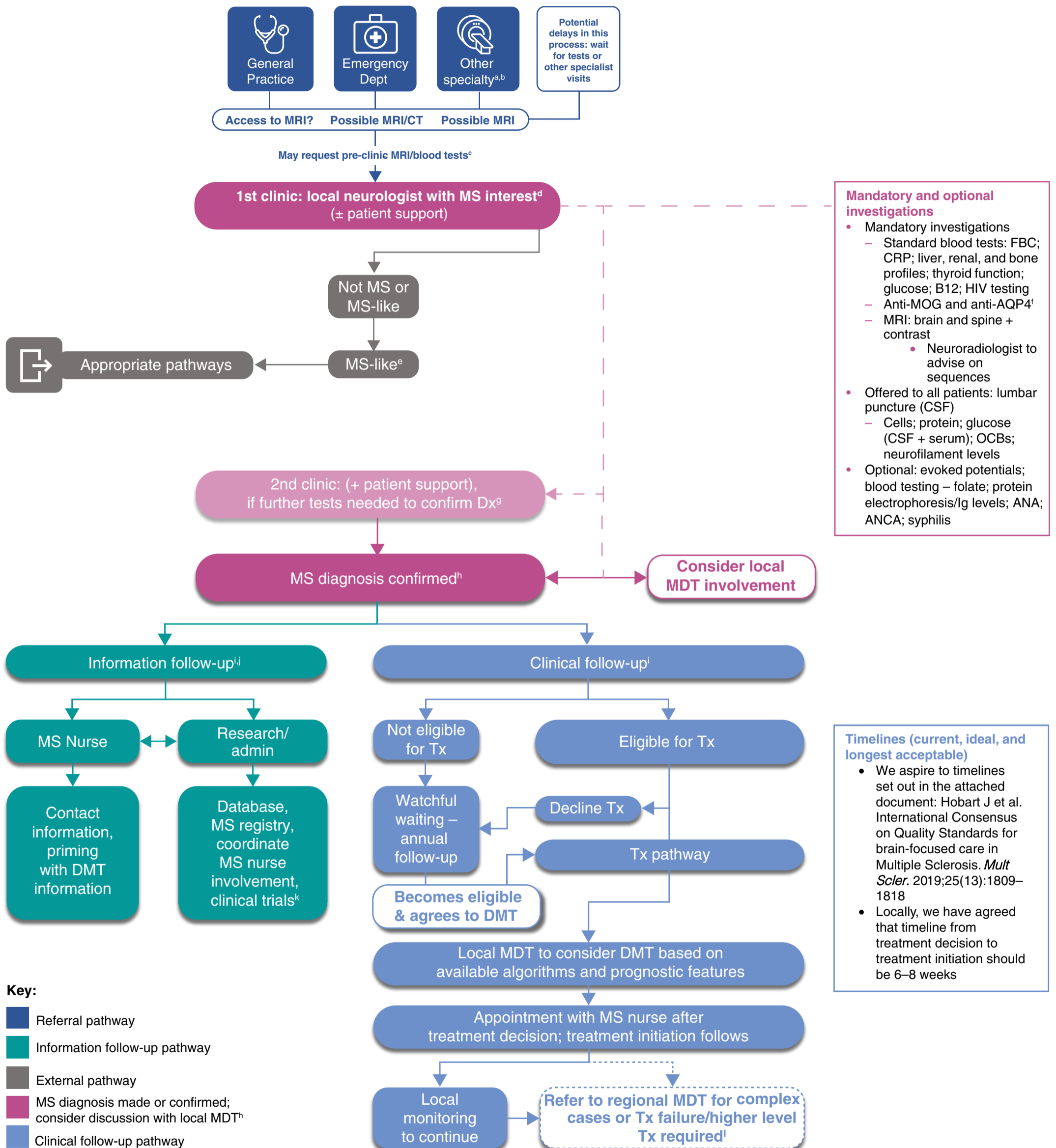


# Entry points for referral and diagnosis of patients with potential MS



<sup>a</sup>E.g. ophthalmologist if presenting with ON or ENT if presenting with vertigo; <sup>b</sup>Depending on specialty, delay may be introduced while waiting for scan; <sup>c</sup>May require cooperation with neuroradiology pathway to ensure timely scan/review for new Dx so no delays are introduced; <sup>d</sup>Any patient for whom MS is identified as a potential diagnosis at any point in the process should be funnelled to a local neurologist focusing on MS; <sup>e</sup>Anti-MOG, neuromyelitis optica; <sup>f</sup>Mandatory for all patients presenting with optic neuritis and spinal cord syndromes and considered good practice to test all; <sup>g</sup>Including more invasive tests like lumbar puncture. Patients with confirmed Dx at this point proceed directly to the information and clinical follow-up pathways; <sup>h</sup>To include CIS with high likelihood of developing into MS; <sup>i</sup>Following NICE quality standards for providing information and support; <sup>j</sup>All newly-diagnosed patients with MS should be offered the opportunity to participate in clinical research; <sup>k</sup>Patients previously diagnosed with MS where there is now diagnostic doubt or those on first line DMTs where a higher level of Tx which has permanent effects on the immune system is being considered. ANA, antinuclear antibody; ANCA, antineutrophil cytoplasmic antibodies; AQP4, aquaporin-4; CIS, clinically isolated syndrome; CRP, c-reactive protein; CSF, cerebrospinal fluid; CT, computed tomography; Dept, department; DMT, disease-modifying therapy; Dx, diagnosis; ENT, ear, nose, and throat; FBC, full blood count; HIV, human immunodeficiency virus; Ig, immunoglobulin; MDT, multidisciplinary team; MOG, myelin oligodendrocyte glycoprotein; MRI, magnetic resonance imaging; MS, multiple sclerosis; NICE, National Institute for Health and Care Excellence; NMOSD, neuromyelitis optica spectrum disorders; OCB, oligoclonal band; ON, optic neuritis; S1P, sphingosine-1-phosphate; Tx, treatment.